

SPECIFICATIONS

Indoor freezer (-10°F) (with floor)  
Vinyl NSF gasket (1/16" joint thickness), Cam-lock layout SN1

SPECIAL INSTRUCTIONS  
Standard crating

WALL PANELS

Construction: 4" urethane  
Exterior Finish: Stucco galvalume  
Interior Finish: Stucco galvalume  
Ceiling connections: Camlock  
Floor connections: Camlock

CEILING PANELS

Construction: 4" urethane  
Exterior Finish: Metal  
Interior Finish: Stucco galvalume  
Ceiling Caps: Factory mounted  
Live Load: 10 psf

FLOOR PANELS

Model: Hand-Truck Floor panels model #HTFN (NSF)  
Construction: 3 1/2" high density urethane  
w/ .080 smooth aluminum @ interior  
over 1/2" plywood  
w/ Metal @ exterior

DOORS

[A]: 36" x 75" flush model G3 self-closing freezer door  
\*\*\* ELECTRICAL COMPONENTS PRE-WIRED \*\*\*  
Brand: Imperial Brown  
Frame: 4" high density urethane, 3-sided  
w/ Stucco galvalume both sides  
w/ 24 ga. stainless steel 430 (magnetic) liners  
w/ 4-sided heat cable in frame [FL-4-116W]  
(24'-11" x 5 ohms/ft (125 total) @ 4.7 W/ft + Pepi - 120V, 1A)  
Leaf: 4" thick, 3-side lap, raised 1/4"  
w/ Stucco galvalume both sides  
w/ Magnetic gasket  
(3) Component Hardware #W59 spring assisted adjustable hinge  
(1) Kason #27C cylinder locking deadbolt handle  
(1) Kason #27C twist-off knob inside release  
(1) Kason 'PUSH' pad  
(1) Kason #1094 hydraulic door closer (polished chrome)  
(1) Weiss 24DT-L, single pole switch and thermometer combo @ ext.  
(1) Kason #1808NM vapor proof LED light fixture  
(1) Kason 1832 heated air vent (23W, 120V, .2A)  
(1) .080 smooth aluminum threshold for interior ramp

PARTS

(4) ea. 4' LED light fixture w/ (2) LED lamps for cooler or freezer application  
(Keil -36W, 120V, 0.3A)-(Fixture ships loose for field installation.)  
(2) ea. (2" x 4") x 96" x Stucco galvalume outside corner vertical closure  
(2) ea. (2" x 4") x 48" x Stucco galvalume outside corner vertical closure  
(1) set Stucco galvalume ceiling closure w/ braces-Please Verify Closure

Dimensions and Requirements  
Estimated Cavity Size = 1' - 6" (18") high x 28' - 11" (347") long

REFRIGERATION

(1) ea. Freezer - Outdoor R448a split system w/ EcoNET  
12648 BTU/H @ 11.6F TD with 14.4 hr runtime @ -10F inside/85F outside

room

110F @ cond. unit, 3683ft altitude  
(1) Russell R448a air cooled condensing unit #RF0500L4SDB-NT  
208-230V/1ø/60Hz/5HP Scroll compressor  
MCA=46, MOPD =60  
43.875W x 33D x 35H x 367lbs.  
(1) Russell R448a Next-Gen All-Temp evaporator model #RL6E105DDARE  
w/ (2) 2-speed EC motors (1A) & electric defrost (9.8A)  
208-230V/1ø/60Hz  
43.625W x 15.5D x 18.125H x 52lbs.

SPECIAL PANELS

xxx w/ (1) ea. 24" deep model #HTFi interior ramp

NOTES

Meets 2009 Federal Energy Independence and Security Act Requirements.

STANDARD NOTES

To prevent condensation, a minimum 2" from the walk-in exterior surface is required. High humidity conditions may require force ventilation in addition to clearance.

Installation site floor must be true and level within 3/16" per 10' or additional costs may be incurred.

R-Plus Doors sliding and vertical lift doors shall not be considered means of egress. Check code egress requirements for your application.

ELECTRICAL

Field electrician to verify maximum acceptable load for light switches.If load is too high, then relay type controls should be used.  
After wiring devices, ALL conduits must be sealed to stop moisture transfer through electrical raceways.  
Failure to seal device per NEC codes WILL VOID WARRANTY.

REVISIONS

22-IB-77733-02

22-IB-77733.00.02-00

NOT FOR CONSTRUCTION

PRELIMINARY

NATIONAL RESTAURANT SUPPLY CO., INC.

- EL PASO, TX

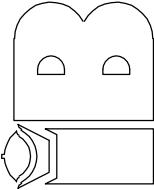
TORNILLO ISD

- EL PASO, TX

NOTE: TO PREVENT CONDENSATION, ALLOW 2" MIN. CLEARANCE AROUND THE EXTERIOR OF INDOOR WALK-INS. MAINTAIN RELATIVE HUMIDITY BELOW 55% AND TEMPERATURE BELOW 75°F OR FORCED VENTILATION MAY BE REQUIRED IN ADDITION TO CLEARANCE.

NOTE: FLOORS OF INSTALLATION SITES SHALL BE TRUE AND LEVEL WITHIN 3/16" PER 10' OR ADDITIONAL COSTS MAY BE INCURRED.

NOTE: MANUFACTURER IS NOT RESPONSIBLE FOR ELECTRICAL, PLUMBING, PERMITS OR CONCRETE WORK UNLESS LISTED ON THE QUOTE.



IMPERIAL BROWN  
198 SE 233rd Ave  
Cresheim, OR 97030  
Phone: 503-665-5539  
F ax: 503-665-2929  
www.imperial-brown.com



- PRELIMINARY DRAWING -

Customer Note: This is a preliminary drawing only. Approving this drawing only indicates that you agree with overall dimensions and door and opening locations. Panel sizes and layout is subject to change. If "Nominal Size" has been quoted, then actual dimensions may end up a bit smaller than drawn herein. Actual dimensions will be shown on subsequent non-preliminary drawings. Should discrepancies be found between drawing and sales order, customer may be asked to approve standard Submittal drawings.

The customer or their representative in signing these drawings is taking responsibility for overall size and fit around building walls, columns and ceiling restrictions, door locations, openings for equipment supplied by others, specifications and accessories listed.

☐ APPROVED FOR FABRICATION WITH NO CHANGES

☐ APPROVED FOR FABRICATION WITH CHANGES

☐ REVISE AND RESUBMIT

Signature: \_\_\_\_\_

DO NOT SCALE THIS DRAWING

SCALE:

3/16" = 1'-0"

DATE DRAWN:

8/16/2022

DATE PRINTED:

8/16/2022

BY:

PDX-Assistant

CHK'D BY:

DRW#:

22-IB-77733-02

BOX:

2 OF 2

SHEET:

1 OF 5

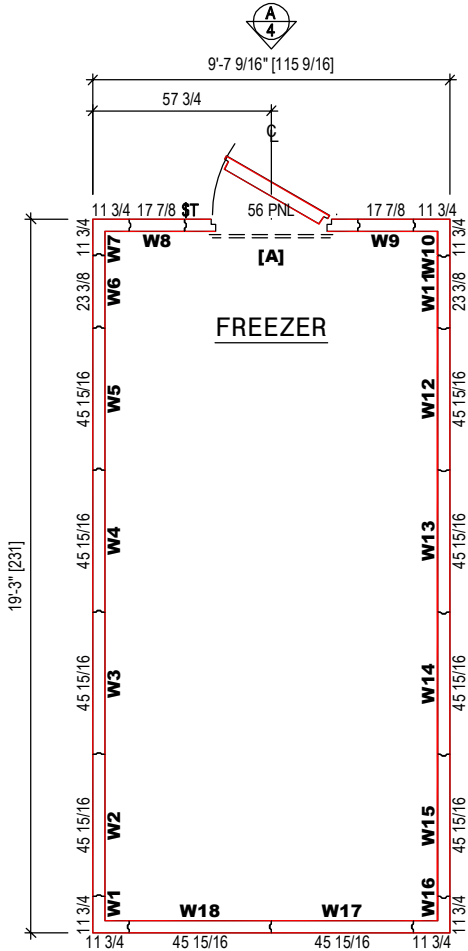


NSF LABEL

N.S.F. LISTED (STD #7)

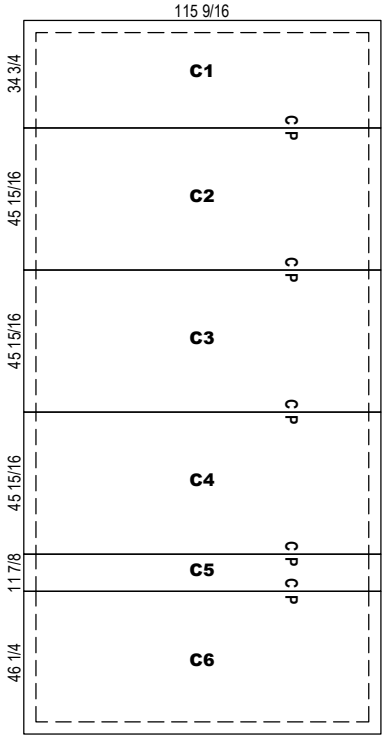
N.S.F. GASKET @ ALL PANEL JOINTS

CONSTRUCTION LEGEND:  
4" urethane  
3 1/2" high density urethane

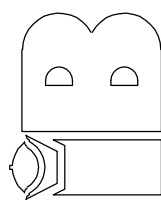


WALL PANELS

Stucco galvalume



CEILING PANELS



IMPERIAL BROWN  
198 SE 233rd Ave  
Gresham, OR 97030  
Phone: 503-665-5539  
Fax: 503-665-2929  
www.imperial-brown.com

DO NOT SCALE THIS DRAWING	
SCALE:	3/16" = 1'-0"
DATE DRAWN:	8/16/2022
DATE PRINTED:	8/16/2022
BY:	PDX-Assistant
CHK'D BY:	
DRW#:	22-IB-77733-02
BOX:	2 OF 2
SHEET:	2 OF 5

NATIONAL RESTAURANT SUPPLY CO., INC.

- EL PASO, TX  
TORNILLO ISD  
- EL PASO, TX

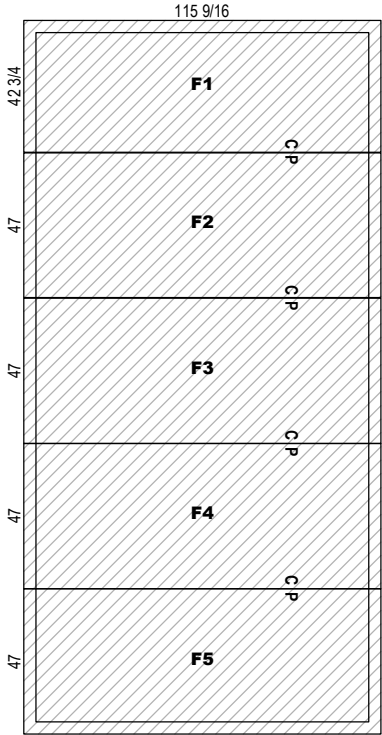
NOTE: TO PREVENT CONDENSATION, ALLOW 2" MIN. CLEARANCE AROUND THE EXTERIOR OF INDOOR WALK-INS. MAINTAIN RELATIVE HUMIDITY BELOW 55% AND TEMPERATURE BELOW 75°F OR FORCED VENTILATION MAY BE REQUIRED IN ADDITION TO CLEARANCE.  
NOTE: FLOORS OF INSTALLATION SITES SHALL BE TRUE AND LEVEL WITHIN 3/16" PER 10' OR ADDITIONAL COSTS MAY BE INCURRED.  
NOTE: MANUFACTURER IS NOT RESPONSIBLE FOR ELECTRICAL, PLUMBING, PERMITS OR CONCRETE WORK UNLESS LISTED ON THE QUOTE.

22-IB-77733-02

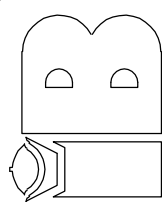
22-IB-77733.00.02-00

NOT FOR CONSTRUCTION

PRELIMINARY



FLOOR PANELS



IMPERIAL BROWN  
198 SE 233rd Ave  
Gresham, OR 97030  
Phone: 503-665-5539  
Fax: 503-665-2929  
www.imperial-brown.com



DO NOT SCALE THIS DRAWING

SCALE:	3/16" = 1'-0"
DATE DRAWN:	8/16/2022
DATE PRINTED:	8/16/2022
BY:	PDX-Assistant
CHK'D BY:	
DRW#:	22-IB-77733-02
BOX:	2 OF 2
SHEET:	3 OF 5

NATIONAL RESTAURANT SUPPLY CO., INC.  
- EL PASO, TX

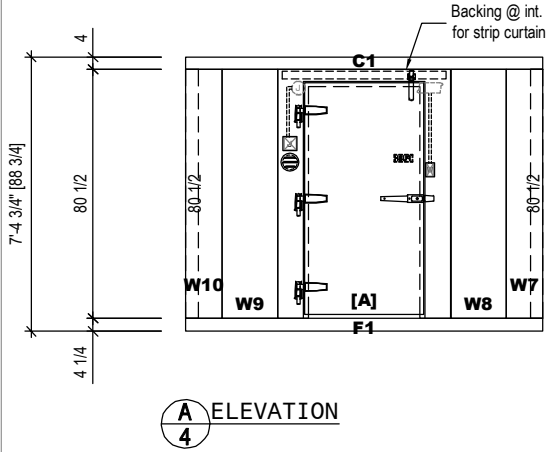
TORNILLO ISD  
- EL PASO, TX

NOTE: TO PREVENT CONDENSATION, ALLOW 2" MIN. CLEARANCE AROUND THE EXTERIOR OF INDOOR WALK-INS. MAINTAIN RELATIVE HUMIDITY BELOW 55% AND TEMPERATURE BELOW 75°F OR FORCED VENTILATION MAY BE REQUIRED IN ADDITION TO CLEARANCE.  
NOTE: FLOORS OF INSTALLATION SITES SHALL BE TRUE AND LEVEL WITHIN 3/16" PER 10' OR ADDITIONAL COSTS MAY BE INCURRED.  
NOTE: MANUFACTURER IS NOT RESPONSIBLE FOR ELECTRICAL, PLUMBING, PERMITS OR CONCRETE WORK UNLESS LISTED ON THE QUOTE.

22-IB-77733-02  
22-IB-77733.00.02-00

NOT FOR CONSTRUCTION

PRELIMINARY



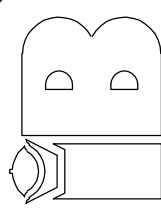
NATIONAL RESTAURANT SUPPLY CO., INC.

- EL PASO, TX

TORNILLO ISD

- EL PASO, TX

NOTE: TO PREVENT CONDENSATION, ALLOW 2" MIN. CLEARANCE AROUND THE EXTERIOR OF INDOOR WALK-INS. MAINTAIN RELATIVE HUMIDITY BELOW 55% AND TEMPERATURE BELOW 75°F OR FORCED VENTILATION MAY BE REQUIRED IN ADDITION TO CLEARANCE.  
NOTE: FLOORS OF INSTALLATION SITES SHALL BE TRUE AND LEVEL WITHIN 3/16" PER 10' OR ADDITIONAL COSTS MAY BE INCURRED.  
NOTE: MANUFACTURER IS NOT RESPONSIBLE FOR ELECTRICAL, PLUMBING, PERMITS OR CONCRETE WORK UNLESS LISTED ON THE QUOTE.



IMPERIAL BROWN  
198 SE 233rd Ave  
Cresheim, OR 97030  
Phone: 503-665-5539  
Fax: 503-665-2929  
www.imperial-brown.com

DO NOT SCALE THIS DRAWING

SCALE: 3/16" = 1'-0"

DATE DRAWN: 8/16/2022  
DATE PRINTED: 8/16/2022  
BY: PDX-Assistant  
CHK'D BY:

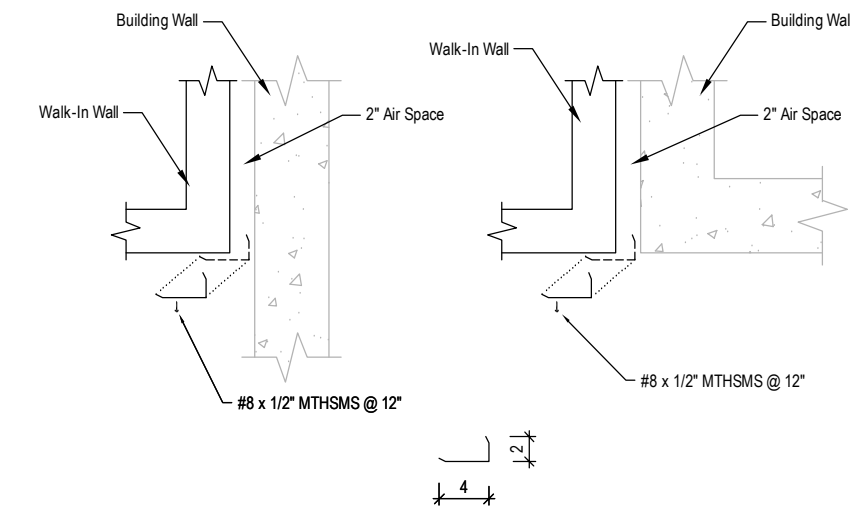
DRW#: 22-IB-77733-02  
BOX: 2 OF 2  
SHEET: 4 OF 5

22-IB-77733-02

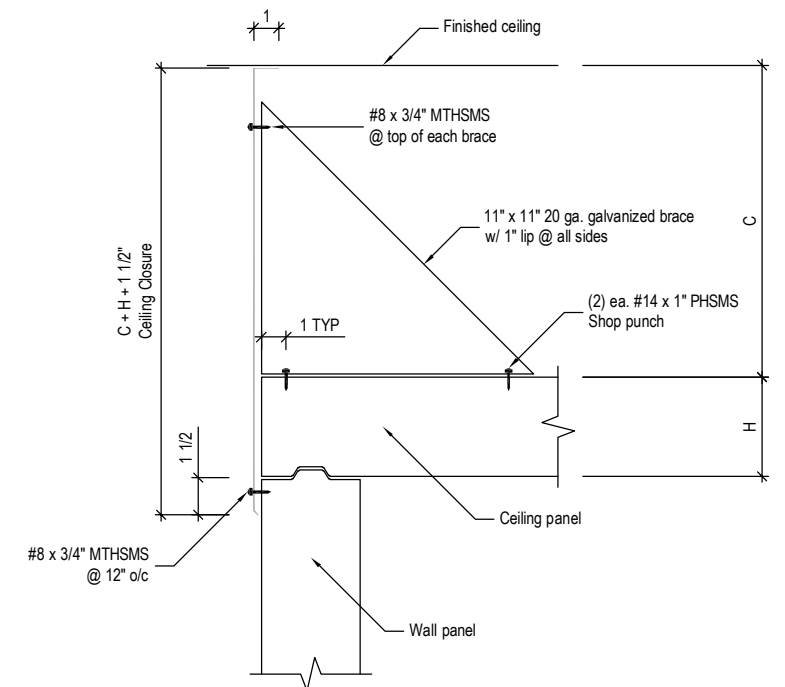
22-IB-77733.00.02-00

NOT FOR CONSTRUCTION

PRELIMINARY

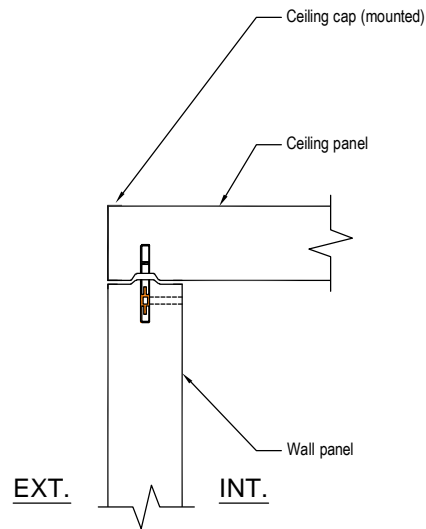


1  
5 VERTICAL CLOSURES

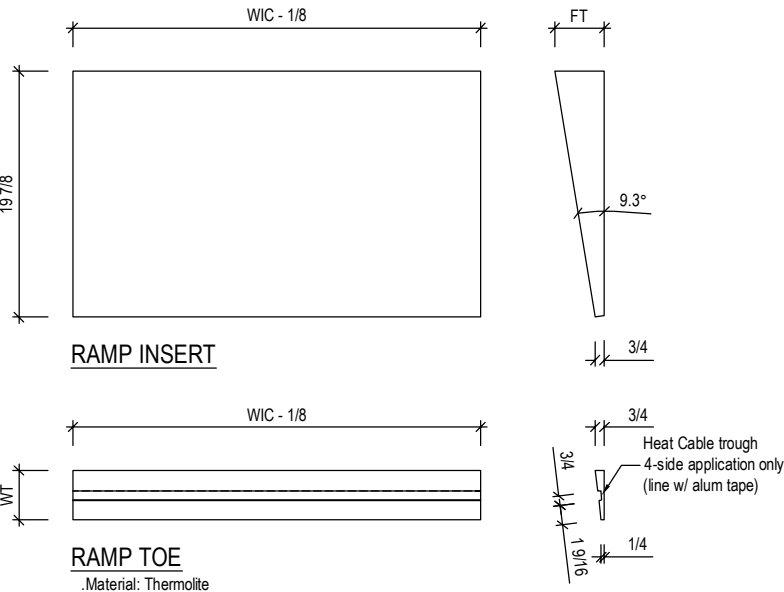


CAUTION: If ceiling height is not provided closures will be back order and shipped later additional freight charges will be charged

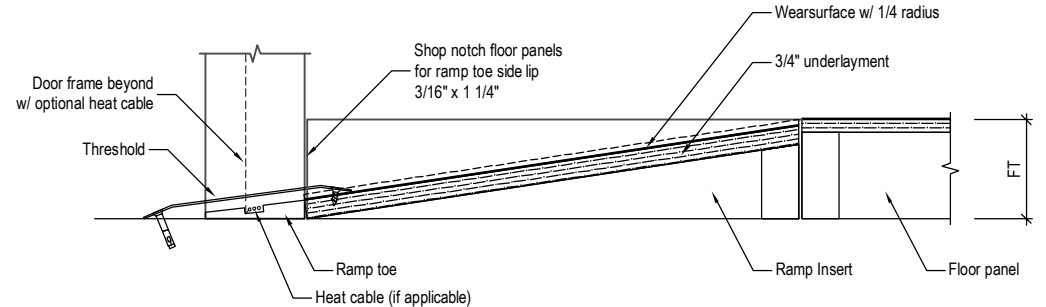
2  
5 STANDARD CEILING CLOSURE W/ BRACES



3  
5 CEILING CONNECTION

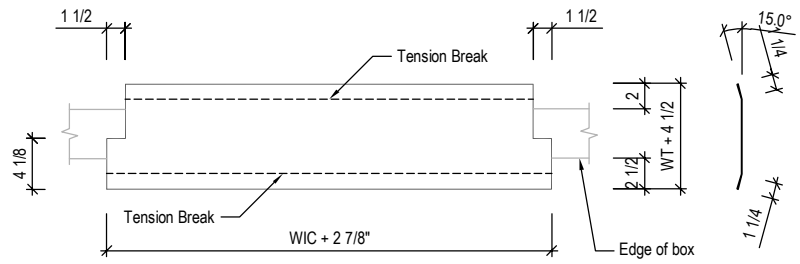


4  
5 INTERIOR RAMP  
24 inch Deep Model HTFi/PJFi for Flush G3 Door



RAMP-FLOOR PANEL ASSEMBLY

- .Raise door leaf 1/4 inch for sloped ramp sill
- .Fill all voids between ramp insert and floor panel with urethane foam
- .Fill all voids solid below threshold w/ urethane foam or grout
- .Seal threshold/jamb joint with silicone

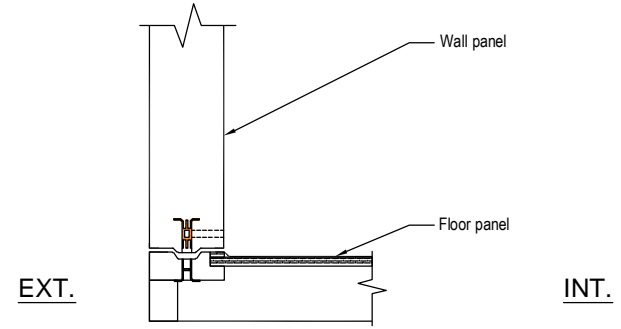


THRESHOLD

- .Material: See door specifications
- .Field drill & countersink (8) 5/16 inch holes for #14 x 1 inch FHSMS or 1/4 inch x 2 1/4 inch dia. FH concrete sleeve anchors
- CAUTION: Avoid heat cable

LEGEND

- .FT: Floor Thickness
- .WIC: Width-In-Clear (door opening width)
- .WT: Wall Thickness



5  
5 FLOOR CONNECTION

22-IB-77733-02  
22-IB-77733.00.02-00

NOT FOR CONSTRUCTION

PRELIMINARY

NATIONAL RESTAURANT SUPPLY CO., INC.  
- EL PASO, TX

TORNILLO ISD  
- EL PASO, TX

NOTE: TO PREVENT CONDENSATION, ALLOW 2" MIN. CLEARANCE AROUND THE EXTERIOR OF INDOOR WALK-INS. MAINTAIN RELATIVE HUMIDITY BELOW 55% AND TEMPERATURE BELOW 75°F OR FORCED VENTILATION MAY BE REQUIRED IN ADDITION TO CLEARANCE.  
NOTE: FLOORS OF INSTALLATION SITES SHALL BE TRUE AND LEVEL WITHIN 3/16" PER '10' OR ADDITIONAL COSTS MAY BE INCURRED.  
NOTE: MANUFACTURER IS NOT RESPONSIBLE FOR ELECTRICAL, PLUMBING, PERMITS OR CONCRETE WORK UNLESS LISTED ON THE QUOTE.

IMPERIAL BROWN  
198 SE 233rd Ave  
Crestham, OR 97030  
Phone: 503-665-5538  
Fax: 503-665-2929  
www.imperial-brown.com

DO NOT SCALE THIS DRAWING

SCALE: 3/16" = 1'-0"

DATE DRAWN: 8/16/2022  
DATE PRINTED: 8/16/2022  
BY: PDX-Assistant  
CHK'D BY:

DRW#: 22-IB-77733-02  
BOX: 2 OF 2  
SHEET: 5 OF 5